



Unwired Signal Quality Guide

Firstly, Power on your BigAir Unwired modem and check the reception indicator on the front of your modem. The top light is your signal light, this needs to be a solid light for you to be able to use the Unwired network.

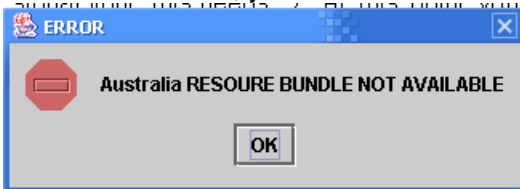


1. Download and install Navini Diagnostics 4.1 (available for Linux, Macintosh and Windows) www.bigair.com.au
This is also provided for you on your BigAir Install Disk.

2. Directly connect your BigAir Unwired modem to your computers Ethernet port, (not through a router, or hub).



3. Open Navini Diagnostics and Ignore warning about Navini Diagnostics lacking the Australian resource bundle, just click OK.

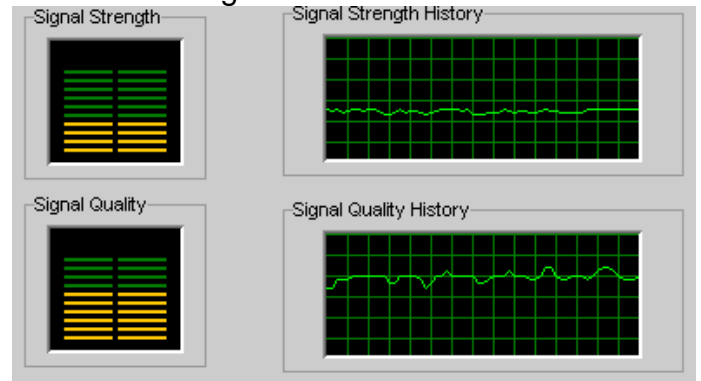


4. If you are running a firewall, you will have to allow Navini Diagnostics to send and receive data to the modem from port 3859.

5. Now that you have started Navini Diagnostics and allowed it to communicate with the modem on port 3859. Check that the graphics in the top right of the window with the title "link status", show green tick above the link from the computer to the modem and from the modem to the tower image.



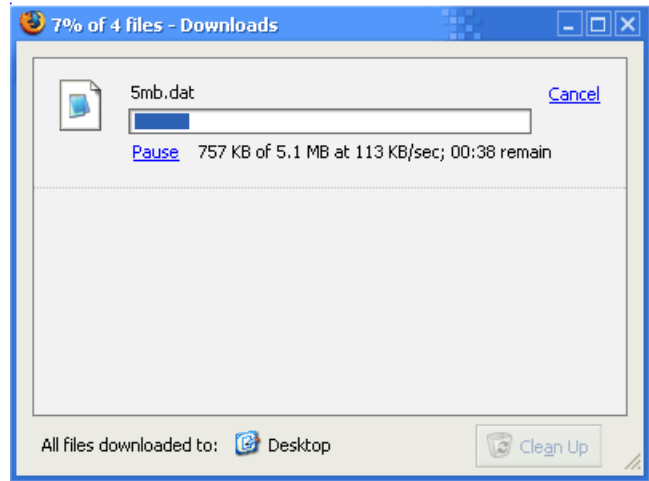
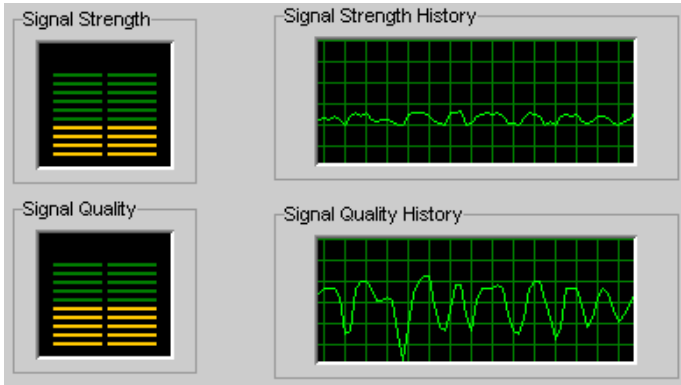
6. At this point you will notice that there are 2 graphs available, first being the signal strength, and second being the signal quality. As long as the signal strength is about 3 bars you will have no problems with the signal, this will also be visible as the light on the modem will be solid.



7. The second graph is the signal Quality graph, this is the most important graph The flatter this graph the faster your BigAir Unwired modem will perform, and the lower the latency you will experience. Note: In the picture below the signal strength is fine for a full 1Mb connection, however the quality is barely allowing dialup speeds.



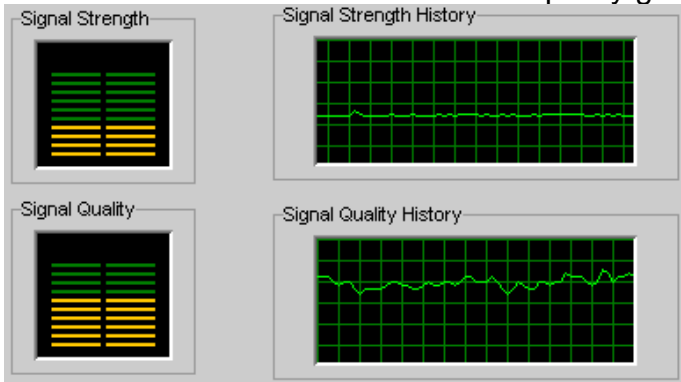
Unwired Signal Quality Guide



8. Reposition your modem trying 45 degree differences in different locations, leaving for 1 minute each time then check the Signal quality graph. A significant improvement can be achieved by only changing the angle of the modem by 45 degrees. Try pointing the BigAir Unwired modem away from the tower, sometimes this works better.

Imagine your Wabit Modem had eyes, can it see out side? Towards a tower? Also the closer your modem is to a window the wider your modems field of vision, you may have to put the Modem on the windowsill looking out to get a good signal.

9. You should now have a consistent quality graph.



10. Surf away at full speed.