



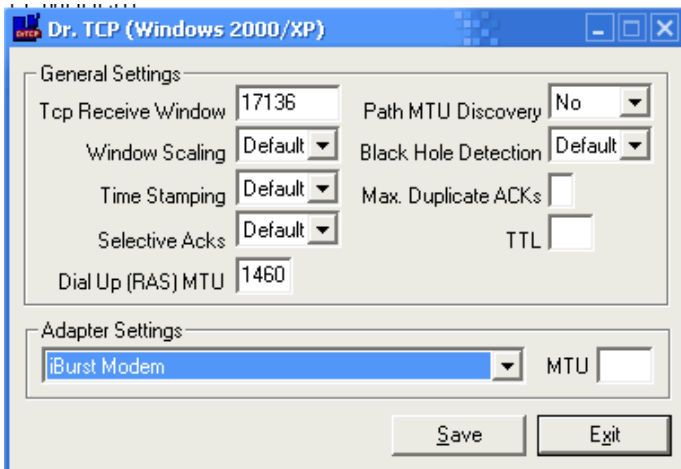
## Dr TCP - MTU Configuration Guide

If you are having problems browsing to some websites (eg. Hotmail.com or smh.com.au) this will be due to your MTU size, if you are using a router, you will need to set in the router's configuration the MTU size of 1456.

If you are connecting your BigAir Wireless Modem to your PC directly you will need to follow this simple guide.

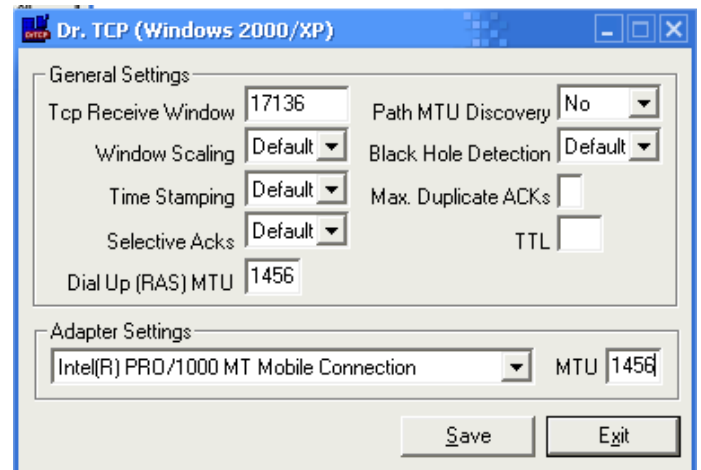
1. Download Dr TCP from our support page, or from [www.bigair.com.au](http://www.bigair.com.au) The Dr TCP program is also in the "BigAir Extras" folder on your install cd.

2. Run the Dr TCP program.



3. From the pull down menu in "Adapter Settings" select your BigAir Wireless Modem, Or your Ethernet card (if you are connecting via Ethernet).

4. In the MTU box enter 1456, and in the Dial Up (RAS) MTU box enter 1456 and click save.



5. Reboot Your computer and reconnect, and you should be able to browse all websites now.

6. If you are still experiencing issues browsing to some websites try entering a MTU and Dialup (RAS) MTU setting of 1440, or try following our signal strength guide to obtain a better signal.